

FOR  
GIRLS  
AND  
BOYS

FOR LIFE



Rangi Ruru  
Girls' School



Christchurch / New Zealand / Years 7 to 13 / Day and Boarding

T +64 3 983 3700 W [rangiruru.school.nz](http://rangiruru.school.nz)

# OUR PROMISE /

A quality education is a gift for life. Our commitment to you and your daughter is that at Rangi Ruru she will be inspired, challenged and empowered within a community that knows and cares for her. She will be motivated to develop knowledge, understanding and skills and a strong set of values; she will make lifelong friends and she will have fun. She will leave Rangi Ruru a connected and curious citizen with the belief in herself to pursue her dreams and the ability to contribute positively to her community.

The focus at Rangi Ruru has always been on providing girls with the skills and attributes they need to be the very best they can be at whatever they choose to do, while encouraging them to be positive and contributing members of their communities.

We are all about girls in the broadest sense. From what happens in the classroom to the design of our school campus; our programmes and culture are about creating an environment which supports girls' development and learning. Our school is a place where girls flourish; a place which celebrates endeavour and success; a place where it is the norm to challenge yourself and to strive for excellence, and a place where citizenship and values matter.

Now girls have the latest technological resources available to them while also being part of a long and proud history. Our campus development takes an innovative approach to campus design that ensures we have the best educational facility in New Zealand, purpose built to the needs of girls.

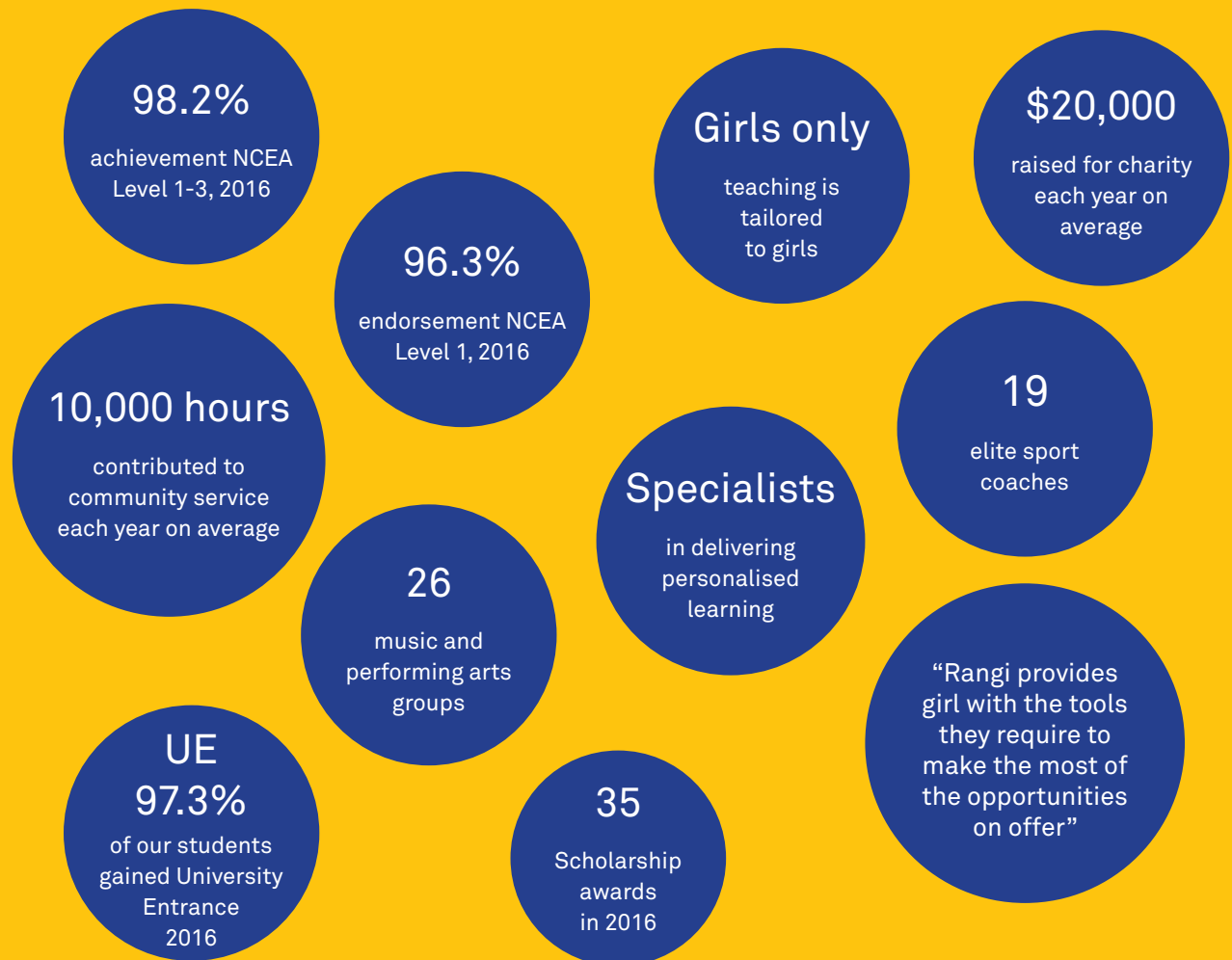
Although a girl's time at Rangi Ruru is just one step in her journey, we know that the knowledge gained here and the connections formed will stay with her for life.

Come and have a look around, meet with me and learn more about how we can make a difference to your daughter's future. In the meantime, visit our website to learn more about us.

**Dr Sandra Hastie**  
Principal



# WHY RANGI?



## About Rangi Ruru Girls' School /

As an independent (private) school for girls in Years 7 to 13, Rangi Ruru has a reputation as one of New Zealand's best performing schools.

What drives this success is our focus on the person and the opportunities we provide to each girl. What is unique about us, is that success, no matter how small, or in what arena, is measured by the personal achievements of each girl.

At Rangi Ruru our safe, caring and nurturing environment ensures that all girls are provided with the opportunity to break barriers, learn skills, discover courage, find inspiration, have an impact, make friends, and become part of a legacy that will stay with them for life.



# RANGI VALUES /

Rangi Ruru girls and staff live by a strong set of values, known as the Rangi Values. They are embedded in all we do and reflected in the kindness, openness, friendship and support felt by members of the Rangi Family.

People will often talk about the 'feeling' you get when you visit Rangi Ruru - that feeling is the intangible expression of the Rangi Values.

**R**espect

**A**roha

e**N**thusiasm & endeavour

**G**enerosity of spirit

**I**ntegrity

"Rangi Ruru  
has stuck to its  
values, culture  
& traditions &  
knows what's  
important"





### **Rangi. For Impact /**

Our motto *Whaia to te Rangi – Seek the Heavenly Things* – reminds us that education is not limited to physical, cultural or academic studies only, but should include a spiritual dimension if we are to find values that are really worthwhile in life.

In our dynamic and supportive environment girls are encouraged to become informed and involved members of our community, to think about the world around them, to contribute and to belong.

### **Rangi. For Inspiration /**

Rangi Ruru is part of the Presbyterian network of schools but welcomes a diversity of beliefs. The Rangi Values are based on Christian values, they serve to inspire our girls and staff and underpin everything we do.

### **Rangi. For Friendship /**

Rangi Ruru provides a safe and welcoming environment where every girl is known and cared for. We foster close relationships with students and staff to ensure that each girl is given the opportunity to be the best she can be.

Girls belong to one of the six Clans. Clans foster the Rangi culture and sense of fun. Through fiercely contested competitions held during the year, close bonds and a strong sense of belonging are nurtured.

### **Rangi. For Opportunities /**

Our approach to education means we place great emphasis on preparing girls for the world of opportunities and challenges that awaits them and on ensuring they have the skills and attitude needed to take advantage of those opportunities and challenges.

Every year Rangi Ruru is among the top New Zealand schools for a wide range of academic, sporting, creative and cultural activities. Rangi girls leave school equipped to continue their studies and more than 95% of Rangi students go on to further tertiary study in New Zealand and overseas, many gaining scholarships.

### **Rangi. For Belonging /**

As one of New Zealand's oldest and most successful schools, Rangi Ruru has established a proud tradition and heritage.

Rangi Ruru was founded in 1889 by Helen Gibson, and was administered by her and her sisters for nearly 60 years. The Gibson sisters had a vision of a school where girls could flourish and excel.

Today, this dream has been realised. Rangi girls go on to break barriers, challenge norms and forge careers in ways the Gibson sisters could have only imagined.





# ENROL /

To discover an education for your daughter that will last a lifetime, make a time today to meet our team and experience all that Rangiruru has to offer.

**Principal**

Dr Sandra Hastie  
+64 3 983 3717  
s.hastie@rangiruru.school.nz

**Enrolments**

Amelia Davis  
+64 3 983 3744  
a.davis@rangiruru.school.nz

**Scholarships**

Anita Sawyers  
+64 3 983 3726  
a.sawyers@rangiruru.school.nz

**Assistant Principal - Curriculum**

Juliet Collins  
+64 3 983 3716  
j.collins@rangiruru.school.nz

**Learning Support Leader**

Astrid Sommaruga  
+64 3 983 3711  
a.sommaruga@rangiruru.school.nz

**Director of Boarding**

Kyleigh Lyth  
+64 3 983 3708  
k.lyth@rangiruru.school.nz

**Director of Music**

Janet Kingsbury  
+64 3 983 3735  
j.kingsbury@rangiruru.school.nz

**Director of Sport**

Jo Fogarty  
+64 3 983 3769  
j.fogarty@rangiruru.school.nz

**Director of Theatre Arts**

Peter Rutherford  
+64 3 983 3714  
p.rutherford@rangiruru.school.nz

**Dean of International Students**

Louise Stanton  
+64 3 983 3722  
l.stanton@rangiruru.school.nz

## The Enrolments Process /

In the year prior to beginning at Rangī Ruru, all pre-enrolled applicants are invited to meet with the Principal, Dr Sandra Hastie.

It is very important to us that we get to know you and your daughter. In the interview we discuss your daughter's interests and motivations, get an understanding of your expectations and answer any questions you may have. It is on the basis of this interview that an offer for enrolment is made.

To pre-enrol, complete an application for enrolment form (available on our website) and return, along with a copy of your daughter's birth certificate/passport, a copy of her most recent school report and an application fee of \$100.

## Enrolment Events /

**Experience Rangī** is an opportunity for girls to spend half a day with us (by appointment).

**Personal tours** of the school and boarding house are available on request (by appointment).

**Open Day** is an annual event for prospective families that provides an opportunity to see the school during a normal day and talk with teachers and students.

**Girls' Day In** gives girls currently in Years 6 and 8 an opportunity to spend a full day as a Rangī girl which involves hands on sessions.

**Girls' Night In** is a chance to spend a night in the boarding house to meet current boarders and staff.

## Scholarships /

We offer a number of entrance scholarships at Years 7 and 9 including Academic, Music and All Round Scholarships.

Scholarship registration starts at the beginning of Term 2. All applicants must complete an application for enrolment and scholarship registration form and will then sit examinations at school. A fee of \$100 applies. All pre-enrolled girls will be sent scholarship information and registration forms.

## Fees /

Tuition and boarding fees for domestic students are set in November for the following year.

Fees for international students are set in April for the following year.

## Sibling Discount

A sibling discount is offered at 5% for the second daughter and 10% for the third when concurrently enrolled (prorated on fees actually paid).

## Alumnae

If you are a member of the Rangī Ruru Alumnae we will waive the \$100 enrolment application fee for your daughter.

We very much look forward to welcoming you to the Rangī Family and to starting the next stage of your daughter's education journey with you.

## Rangī. For Life.

## ENROL NOW /

To discuss the enrolment process, fees, scholarships or to book a personal tour, contact Registrar, Amelia Davis  
+64 3 983 3744  
enrolments@rangiruru.school.nz

More information, including the online application form, is available at

**rangiruru.school.nz**

# LEARNING /

Our teaching and learning programmes are designed to extend girls' thinking and help them make the most of the opportunities offered to them.

Girls are challenged to think creatively and critically and to take ownership of their learning. Through these experiences they learn about themselves and the world around them.

## **Expert Teachers /**

Rangi Ruru teachers are specialists in their subject areas and in the education of girls. They are passionate about teaching and learning and take an active interest in the lives of their students.

## **Small Classes /**

Rangi Ruru has small classes. This structure means teachers know their students well and can tailor programmes to their needs. This includes learning support and special programmes of enrichment and extension which ensure girls are challenged and supported.

## **Campus /**

Rangi Ruru has a picturesque campus with the historic homestead Te Koraha at the heart of the school, surrounded with beautiful gardens and green spaces.

The campus has been designed for the needs of tomorrow's women leaders, focused on personalised learning and grounded in best practice teaching and learning. These buildings include collaboration zones where girls work together to drive their own learning. Together with the latest technology girls are now connecting not only with each other but the wider community and the world around them for a truly global perspective to learning.


## **Technology /**

Technology is used extensively across the school, bringing the world into the classroom. Rangi Ruru is a BYOD school which means each girl is required to bring her own device. Through the wireless network, girls can safely access learning resources, homework support, share information and interact with their teachers or fellow students, anywhere they happen to be.

## **Outdoor Education /**

Learning is made relevant and engaging through a wide range of experiences inside and outside the classroom. Our outdoor education programme begins at Year 7 with a range of experiences that are both challenging and rewarding. These experiences include the opportunity to try abseiling, rock climbing, camping out, river crossing, orienteering and sea kayaking.

The Year 12 Camp is a highlight for many students as they come together to build on their team work and prepare to move on to Year 13.



"The teachers spend time with the girls to really get to know them - I think that's rare"



# CURRICULUM /

Rangi Ruru is Christchurch's only independent girls' school offering a true Year 7 to 13 experience, delivering a seamless curriculum by specialist teachers at all year levels.

Following the general framework of the New Zealand Curriculum, we prepare our students for the National Certificate of Educational Achievement (NCEA) which is a globally recognised qualification. We also encourage students to compete for the New Zealand Scholarship Awards. Specific information relating to the curriculum and subject options at each year level is available in the Curriculum Handbook, available on our website.


## Starting / Year 7

Starting your daughter at Rangi Ruru in Year 7 will ensure that she is future-ready, equipped with the necessary skills and knowledge to be a powerful learner.

The stability of remaining in the same school from Year 7 through to Year 13 means no extra adjustment period at Year 9. From Year 7 girls are challenged to be resilient and responsible in preparation for transition into the secondary school.

At Rangi Ruru all girls are supported with specific targeted of learning.

From Year 7, girls have an intensive focus on Mathematics, English, Science, Social Studies, Physical Education and Health and Digital Technology. Modules in Art, Music, Technology, Performing Arts, and Languages will give exposure to a wide range of areas of interest and enable deep learning to occur. Girls are also involved in investigative challenges, where they will explore real world problems.



“Empowering  
girls to be all that  
they can be”

## Starting / Year 9

We offer more than 36 subject options across different learning areas in Years 9 to 13. This breadth is important to experience before they begin to specialise and pursue in their senior years those subjects they are passionate about or in which they have a particular ability. This provides them with flexible pathways that will support further study and careers. A language is compulsory at Year 9.

Girls in Years 11 to 13 complete NCEA Levels 1 to 3 and their focus is personalised to suit their level of study. This may include study at multiple levels, acceleration, a specifically tailored course or learning support.



# PERSONALISATION /

Rangi Ruru stands out due to our 'personalised' approach to learning. We do this by knowing and understanding each girl and focusing her learning needs, her individual interests, goals and abilities. We do this across all aspects of her learning, including the academic focus and also through her co-curricular activities.

This is evidenced by

- Tailored programmes of extension and enrichment to support the highly able
- The ability for girls to multi-level and access courses from outside of the school
- Outstanding Music and Performing Arts opportunities that support and enhance the learning of talented girls
- Special programmes including SOAR (for elite athletes), Stellar Programme (for high performing musicians), High Performance Learning (academic support for highly able students) and the Equestrian Programme.

Personalisation is made possible due to our Wellbeing Programme which puts mental and physical health at the centre of everything we do. You can read more about our Wellbeing Programme over the page.

"Rangi Ruru values each girl for her individual personality, skill strengths & weaknesses"





## Personal Development Plans /

Every girl at Rangi Ruru has a Personal Development Plan, known as a PDP, which is essential to our personalised approach.

Students and parents meet with Tutors early in the year to discuss a student's strengths, areas which need development, commitments and goals, and to formulate a personal plan for each student for the year. The student documents her plan in her online portfolio and is encouraged to reflect on her goals and modify her plan as necessary throughout the year. The tutor also monitors the student's progress during the year. Because the PDP is recorded electronically, it is a living document which remains with the student for her time at school.

Parents are encouraged to be part of this process, to attend the PDP meeting and to have ongoing discussions with their daughters about their learning and school activities.

## Pathways & Careers /

Rangi Ruru takes a unique approach to pathways and careers planning for girls. Working exclusively with innovative careers specialists, Crimson Education, Rangi Ruru delivers personalised advice to students and their parents.

Our Pathways & Careers Strategist helps girls to identify skills, interests and strengths which may lead to career choices. Future pathways opportunities may include tertiary study and we support girls with the selection and application process for both domestic and international universities and institutions. Alternatively, we support girls to enter the workforce, trade courses or to take a gap year.

Thanks to the partnership with Crimson Education, we are able to provide unparalleled options and opportunities for girls.

## Learning Support /

The Learning Centre Team delivers learning support, solutions and teaching programmes for individual, small group and classroom learning issues. The team of specialists and teacher aides provide support through:

- Literacy and mathematical skills development
- Study skills and assessment techniques
- 'Learning lessons' linked to curriculum areas
- Special assessment conditions applications for NCEA.

Rangi Ruru recognises that highly able students have special needs and may require additional support and challenges to maximise their potential. The **High Performance Learning team (formerly known as Gifted and Talent Education)** provides additional learning opportunities, support and mentoring for students who have the potential for exceptional levels of performance. This includes guidance with course selection, acceleration and multi-levering, workshops, lectures and field trips.

**ESOL (English for Speakers of Other Languages)** tuition is provided for individuals or small groups with a specialist teacher.





# WELLBEING /

Our approach to wellbeing is unique. Every girl is given the guidance, support and tools she needs to understand her place in the world and to succeed.

## Wellbeing Development /

The Wellbeing Programme is firmly rooted in established practices of positive psychology and growth mindset which has been adapted to reflect the Rangī Values.

Wellbeing practices start at Year 7 and school-wide involvement means that wellbeing has become central to every aspect of school life both in and outside the classroom.

## Pastoral Care /

Along with Tutors, the Pastoral Care Team includes:

**Year Level Deans:** work alongside the Tutors to ensure that all girls are happy, connected and progressing well. The Year Level Dean and many of the tutors stay with the year group from Years 9 to 13. A Year Level Dean also oversees Years 7 and 8.

**Chaplain** supports and guides student input in school chapel services and leads the family services. The Chaplain takes responsibility for the Religious Studies part of the Global Living Programme and is available to support the community in times of joy and sorrow, celebration and farewell.

**Guidance Counsellor** provides support to all girls, assisting with issues such as stress management, relationships and mental wellbeing.

**Health Coordinator** manages programmes relating to personal health, physical development and relationships.

**Dean of International Students** is responsible for the pastoral care of international students.

## Student Development & Leadership /

Opportunities exist for students at all year levels to collaborate and lead, developing the essential life skills of self-confidence, resilience and servant leadership.

We offer programmes that foster teamwork and develop skills to become leaders. These include; the William Pike Challenge, the Duke of Edinburgh Hillary Award, Year Level camps, the Spirit of New Zealand, the Emerging Leader's Conference and the Sir Peter Blake Leadership Week.

Our Peer Support Programme enables Year 12 students to lead small groups of Year 9 students in activities focussed on cooperation, communication and culture.

Significant leadership roles are available to students in Year 13. The Student Leadership Team comprises eight Senior Leaders and twelve Clan Leaders, who receive ongoing mentoring in their roles. Clan Leaders work together to ensure all girls feel a sense of belonging to their Clan, leading them in a range of challenges from theatre sports to athletics, culminating in the fiercely competitive Clan singing competition.

## Global Living /

Global Living is a unique and flexible programme for all girls in Years 7 to 13 and is designed to meet the varied needs of the girls at each level. The programme provides practical, social and life skills and helps develop knowledge to enable girls to contribute actively to their own wellbeing, while also coping with the changes they will inevitably face in their futures as global citizens, local community members and in their family lives.

The programme is based around the Rangī Values and the concepts of citizenship.

“It’s the team  
approach that  
really stands out  
at Rangi Ruru”





# SPORT /

Sport at Rangi Ruru is as much about the team spirit and having fun as it is about the competition and challenge. We have a proud history of sporting success at local, regional and national levels for both teams and individuals, and across a very wide range of codes.

All girls participate in physical education as part of the curriculum and many belong to one or more sports teams. The school offers 30 sporting codes under the guidance of more than 75 coaches catering for a wide variety of interests and abilities.

We believe our investment in top quality coaches is of significant benefit to the girls' success and wellbeing. Our coaches include a mix of current and former New Zealand representatives. Visit our website for the full list of elite sport coaches.

Excellent on-campus sports facilities including the school gymnasium, pool, new water-based hockey turf, hard courts and the specialist fitness centre are used during physical education classes as well as for team training to help girls maintain their skills and fitness.



## Recent Successes /

**Athletics** - 12 medals Canterbury, nine medals at South Island and two medals at Nationals champs, 2016

**Basketball** - 1st Canterbury Premier girls competition and 2nd South Island Secondary Schools' competition, 2016

**Cycling** - winner U20 Canterbury Team Time Trial, 2016

**Duathlon** - Canterbury U14, U16 and U19 champions, 2016

**Equestrian** - Winners of the Canterbury Interschools' Showjumping championships and One Day Horse Trials, 2016  
South Island Mounted Games winners, 2017

**Hockey** - 5th Federation Cup (1st XI) and 1st Chris Arthur Cup (2nd XI) in national NZ Secondary Schools' tournaments, 2016

**Netball** - winners Supernet Reserve title, 2016

**Rowing** - Top girls' school at the AON Maadi Cup, 2016 & 2017

**Swimming** - 2nd school in Canterbury, 2016

**Tennis** - 2nd Canterbury Secondary Schools' competition, 2016

**Touch** - winners of Secondary Schools Super Touch competition, 2017

Volleyball - South Island Secondary Schools, Div 2 champions, 2017

## School Events /

All girls participate in school-wide events including Athletic Sports, Swimming Sports and the Cross Country.

## SOAR Programme /

Our talented athletes are supported in their code with the SOAR Programme.

'Supporting Outstanding Athletes at Rangi' (SOAR) provides specialist coaching, guidance, mentoring and training for our elite athletes and gives them flexibility in their academic programme to allow them to train and compete.

Through the programme SOAR athletes have access to information, speakers and resources to help them become the best performer they can, both in and out of the classroom.

There are limited spaces available in the programme each year and girls apply to the Director of Sport at the beginning of each year.



## Equestrian Programme /

We are the only girls' secondary school in the South Island with a dedicated Equestrian Programme.

This unique programme combines riding and competition with equine studies and horse care through agistment arrangements with local stables. It also includes a Learn to Ride programme for girls who are interested in riding but don't own a horse. The programme's breadth allows it to cater for a diversity of equestrian and equine pursuits.



"You never have to apologise for working hard at Rangi Ruru"



# STELLAR PROGRAMME /

Rangi is regarded as one of New Zealand's top performing schools in music. The Stellar Programme, through a personalised learning environment, provides

- a framework to inspire, challenge and empower musicians from Years 7 to 13 by supporting them to achieve personal bests at the highest level
- opportunities to extend musical horizons through experiencing a wide range of musical pursuits, including mentoring with leading creative and forward thinking musicians, whilst being supported and encouraged to be involved in the wider academic, sporting, cultural and creative programmes at Rangi.

A girl who has been a part of Rangi's **Stellar Programme** will have choices. She will leave Rangi with the skills and dispositions to contribute positively and connect with others through music to any community that she may become involved in.

“Rangi Ruru is a school that gives a girl huge confidence”





## Teaching and Learning

Music is offered as a subject to all girls, with increasing specialization available as a girl progresses through NCEA Levels 1-3 and Scholarship. Courses are seamless, individualized and student-centred. Girls are exposed to a diversity of musical styles and genres through performance, notated composition, and song writing; supported by an exploration of musical contexts and analysis, and music literacy. The skills of live recording and mixing are developed, with a range of current music technologies used to assist girls to develop and present their work in innovative ways.

Teaching and learning opportunities in the Stellar Programme take place both within the timetabled school day and in flexible times before and after school, lunchtimes, evenings and sometimes weekends.

Rangi music groups are highly regarded. Ensembles are frequently regional and national award winners in a diverse range of secondary school music events, and are in demand as performers in many concerts around the Christchurch region.

Our talented musicians are frequently selected to be members of regional and national groups including the NZSO National Youth Orchestra, National Youth Jazz Band, National Youth Symphonic Winds, New Zealand Secondary Schools' Symphony Orchestra, New Zealand Secondary Schools' Choir, and the Pettman National Junior Academy of Music. Many are fully involved in a range of music and performing arts groups in the wider Christchurch community.

Many of our musicians take a full part in Rangi's highly regarded



Senior and Junior Musical Theatre productions, as vocalists, instrumentalists and crew members.

## Choral/Vocal Programme

**Rangi Voices** (Years 7–10) and **Resolutions** (Years 11–13) are auditioned choirs that perform a wide range of repertoire at school and community events, including the New Zealand Choral Federation BIG SING competition and **Voices Festival**. Smaller vocal ensembles are formed according to interest, including **Barbershop** and **Jazz Ensembles**. Opportunities are made available for solo work and gigs both in school and the wider community, including singing with the **Jazz Band/Combo**, and in **Junior and Senior Productions**.

## Orchestral Programme

The **Rangi Sinfonia** is Rangi's senior orchestra, and is open by audition to advanced players from Years 7–13. The **Sinfonia** performs at various functions and participates in the annual *Christchurch Secondary Schools' Orchestra Festival*. **Rangi Players** is a training ensemble for instrumentalists to prepare for audition for the **Rangi Sinfonia** and/or **Jazz Band**. Performances are school and community based, and include workshops and performances with students from contributing schools.

## Jazz Programme

Our **Jazz Band** is open to girls by audition and performs at school and community events, including the *Southern Jam Youth Jazz Festival* and *ARA Jazz Quest*. The **Jazz Combo** provides opportunities for advanced jazz musicians to further develop their skills



in improvisation and ensemble playing.

## Chamber Music Programme

**Chamber Music** groups, including percussion and saxophone ensembles, participate in the *NZCT Chamber Music Competition*. The specialised skills for playing in chamber music ensembles are developed over several years, starting in Years 7 and 8.

## Band Programme

**Rock Bands** work with Rangi's contemporary music specialist, writing their own material, performing in the *Smokefree Rockquest* competition and live gigs, and recording in recording studios. The **Junior Band Programme** is aimed at girls particularly in Year 9 as an introduction to the skills of performing in a band.

## New Music Programme

Girls who have a special interest in **Composition** and **Songwriting** are well supported through working with established and recognized composers and songwriters both individually and in workshop situations.

## Itinerant Music Programme

**Individual tuition** in a wide range of instruments, voice, composition, and speech and drama is offered to girls wishing to further develop their performance skills to support their curricular and co-curricular programmes of learning. This tuition is given by some of Christchurch's most well-known specialist music and speech and drama tutors.



# THEATRE ARTS /



“My daughter tells me that you are the odd one out at Rangi if you don’t have a go at things”

Theatre Arts including Drama and Dance, offers a huge variety of performance opportunities for girls of all ages.

There are a number of opportunities for girls to get involved with drama and dance, including a major production (senior and junior) as well as Stage Challenge. Recent major productions, performed with Christ's College include *Bugsy Malone*, *Jesus Christ Superstar*, *Romeo & Juliet*, *Cats* and in 2016 *Our House*.

In 2015 Rangi Ruru performed *Julius Caesar* with an all-female cast and in 2017 they presented *Revenge of the Amazons*, the Jean Betts adaptation of William Shakespeare's *A Midsummer Night's Dream*.

Senior drama classes also undertake a number of public performances each year and the girls get the opportunity to enter the Sheilah Winn Shakespeare Festival as performers. Senior girls may also act as student

directors for this festival. In 2015, Rangi Ruru's senior theatre students took their performance of the play *Passengers* to London. A group of Year 13 students also received Best Youth Production and Runner-up Best Overall Production at the acclaimed Norfolk Island Theatre Festival for their performance of *Breaking News*.

There are three dance companies allowing girls from Years 7 to 13 to participate in dance. These companies are involved in performances throughout the year including Cultural Concert and Prize Giving, as well as the Annual Dance Show.

There is a Junior Drama Club, Theatre Sports and a very active group of girls who work within technical theatre as part of stage crews and lighting and sound operators.





# OPPORTUNITIES /



“It’s a real family environment & the values they teach and instil in the girls are great”

# GROUPS /

Opportunities exist right across Rangī Ruru for girls to get involved and take the lead in their education.

Groups and activities offer an opportunity to extend and enhance learning outside of the classroom, while getting to know other girls from across the school. Groups can be social or competitive and cater for the novice or expert.

## Groups /

Girls can choose to be involved in a wide variety of groups including:

- Creative Writing
- Chess
- Debating
- Duke of Edinburgh's Hillary Award
- Future Problem Solving
- International Club
- Kapa Haka
- Model UN
- Philosophy
- Young Enterprise
- Young Farmers

Girls can also become members of the Councils - sport, cultural, service, environment, health, community and house.

## Activities /

Girls can volunteer for service groups that assist with events and activities in the school throughout the year, including:

- Fitness Assistant
- Library Assistant
- Tech Angel
- Rangī Host

Girls may also be involved in additional opportunities including:

- Spirit of New Zealand/ Spirit Trophy
- Outward Bound
- Antipodeans Abroad
- Samoa Cultural Experience

Each year, student exchanges are offered to Argentina, Japan (language based), the United Kingdom, United States and India.

# SERVICE /

Community Service is actively encouraged and all girls are provided with opportunities to be involved with community events and charities through volunteer work.

The school raises over \$20,000 for its chosen causes, both local and global, each year. Senior girls contribute in excess of 10,000 hours to community service annually.

Trips such as the Samoa Experience and Antipodeans Abroad offer valuable community service experience.





# BOARDING /

Boarding at Rangi Ruru enables girls to pursue all their personal interests including academic, sporting and cultural. It is also an opportunity for them experience and try new activities. Home to 120 girls, our Years 7 to 13 girls are welcomed from within New Zealand and around the world.

While providing a safe, secure and caring environment where students can feel supported in their learning we offer a unique opportunity for girls to acquire and learn more about themselves and others through our Boarding Key Competencies and Pastoral Care Programmes.

We believe every girl should have the opportunity to discover more about themselves, learn what their core beliefs and values are to help enrich their identity.

We want our girls to feel a strong sense of belonging within the house and feel a part of an extended family. Our positive behaviour model focuses on praising girls on all aspects of their life, their self-management skills, their relationships with others and what they bring to our community.

Our girls develop independence, confidence and how to be well-rounded individuals. When they leave boarding, we want them to be kind and compassionate to others and make a positive difference in our world.

Our experienced and dedicated staff develop close caring relationships with all our girls. Embracing each one of their unique personalities and offering guidance and support.

We offer various boarding options from fulltime to casual boarding for day girls who wish to have an experience or when parents are away.

We want the experience of boarding to have a positive impact in every girl's life. Where she creates lasting friendships for years to come, understands who she is and what she values.





### **Life As A Boarder /**

The staff at the boarding house offer support for girls to pursue their personal interests and organise many enjoyable activities throughout the year.

During weekends, boarders can take part in a range of activities including trips to the theatre, ski trips, adventure outings or regular competitive sporting pursuits. They also have access to the library, gymnasium, fitness centre, swimming pool and other school facilities.

There are a number of celebrations, themed evenings and boarding events throughout the year allowing our boarding community to come together in unity and strengthen our positive House culture. Parents are encouraged to join these special events.

### **The House /**

Girls in Years 7 to 10 share a four-bed room while Years 11 to 12 share a two-bed room. Year 13 girls will get an experience in a semi-flatting situation which provides a single room, shared kitchen, lounge and laundry facilities to prepare them for future independence.

Year groups have their own space sharing dormitories. Throughout the house are various wellbeing spaces, enabling and fostering relationships with other girls in the house.

The boarding house is connected to the wireless network which provides access to learning materials and school email accounts. For girls in Years 7 to 10, structured prep times are held within the House, supported by our Prep Tutors. Senior students

have the option of completing prep in their rooms or with Prep Tutors.

### **A History of Boarding /**

Boarding began at Rangi Ruru in 1896 in the original school on Webb Street. In 1923 the school moved to its present site on Hewitts Road and Te Koraha became home to boarders for the next 78 years.

Boarders live on site in a modern boarding house that has been purpose built to cater to the needs of girls.

With this strong history and experience in caring for girls, we are the right choice when it comes to the care of your daughter.

**“Quality  
relationships  
are a strength at  
Rangi Ruru”**



# LEARN MORE /

If you want to get a feel for what life at Rangi Ruru is like before you come and see us, then check us out on social media.

[Facebook.com/RangiRuru](https://www.facebook.com/RangiRuru)

[Instagram.com/rangiruru](https://www.instagram.com/rangiruru)

[Twitter.com/rangi\\_ruru](https://twitter.com/rangi_ruru)

[YouTube.com \(search Rangi Ruru\)](https://www.youtube.com/search?q=Rangi+Ruru)

Quotes from current and prospective parents are taken from  
The Field Connection Ltd market research, 2015

59 Hewitts Road,  
Christchurch 8014  
New Zealand

T +64 3 983 3700  
E [office@rangiruru.school.nz](mailto:office@rangiruru.school.nz)  
W [rangiruru.school.nz](http://rangiruru.school.nz)

Rangi. For Life.®